

# Kalamazoo County Road Commission

---

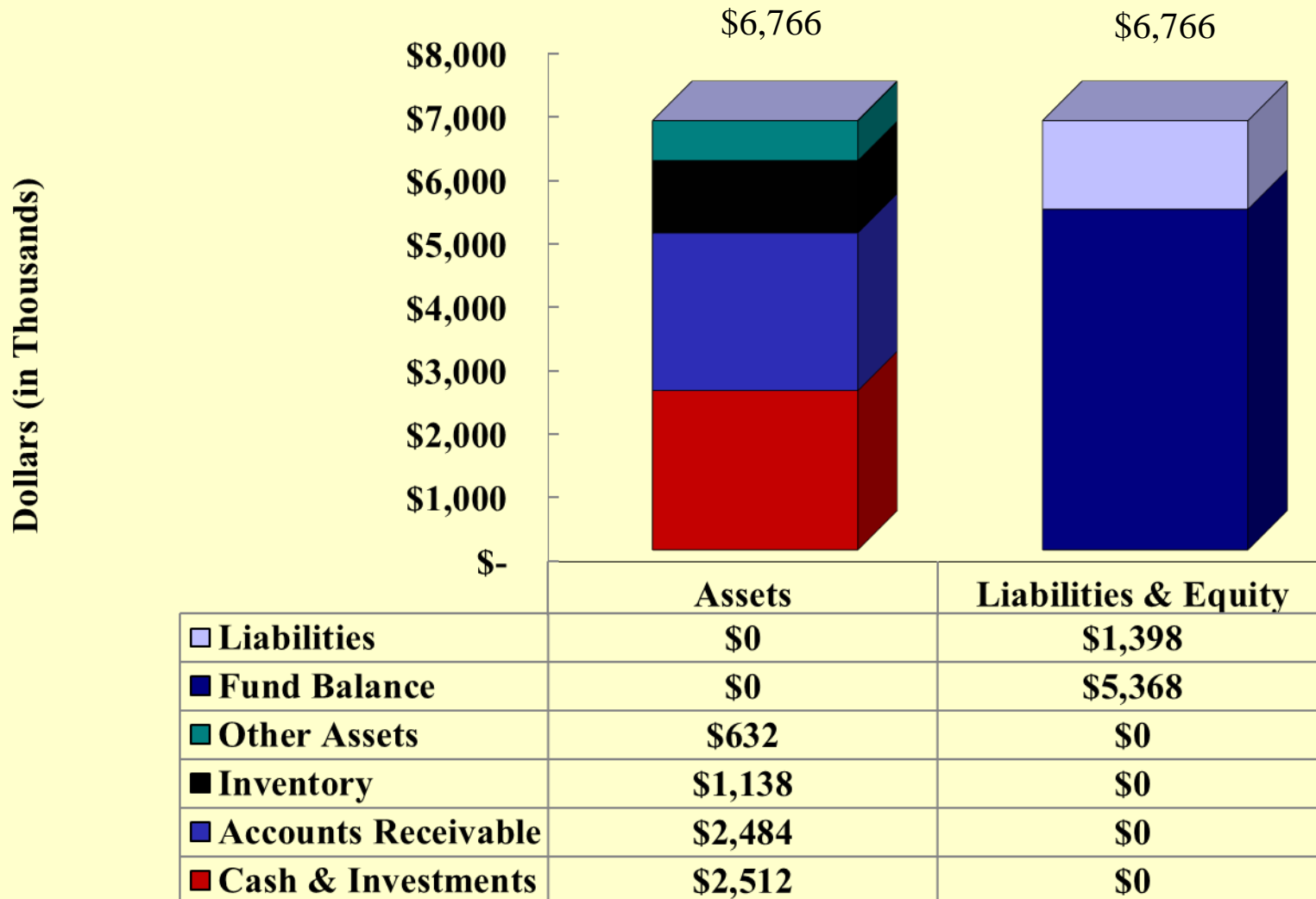
**Financial Statement Presentation  
December 31, 2012**

**Presented By:  
Beth Bialy  
Kris Ray**

# Kalamazoo County Road Commission

## Road Fund Balance Sheet (in thousands)

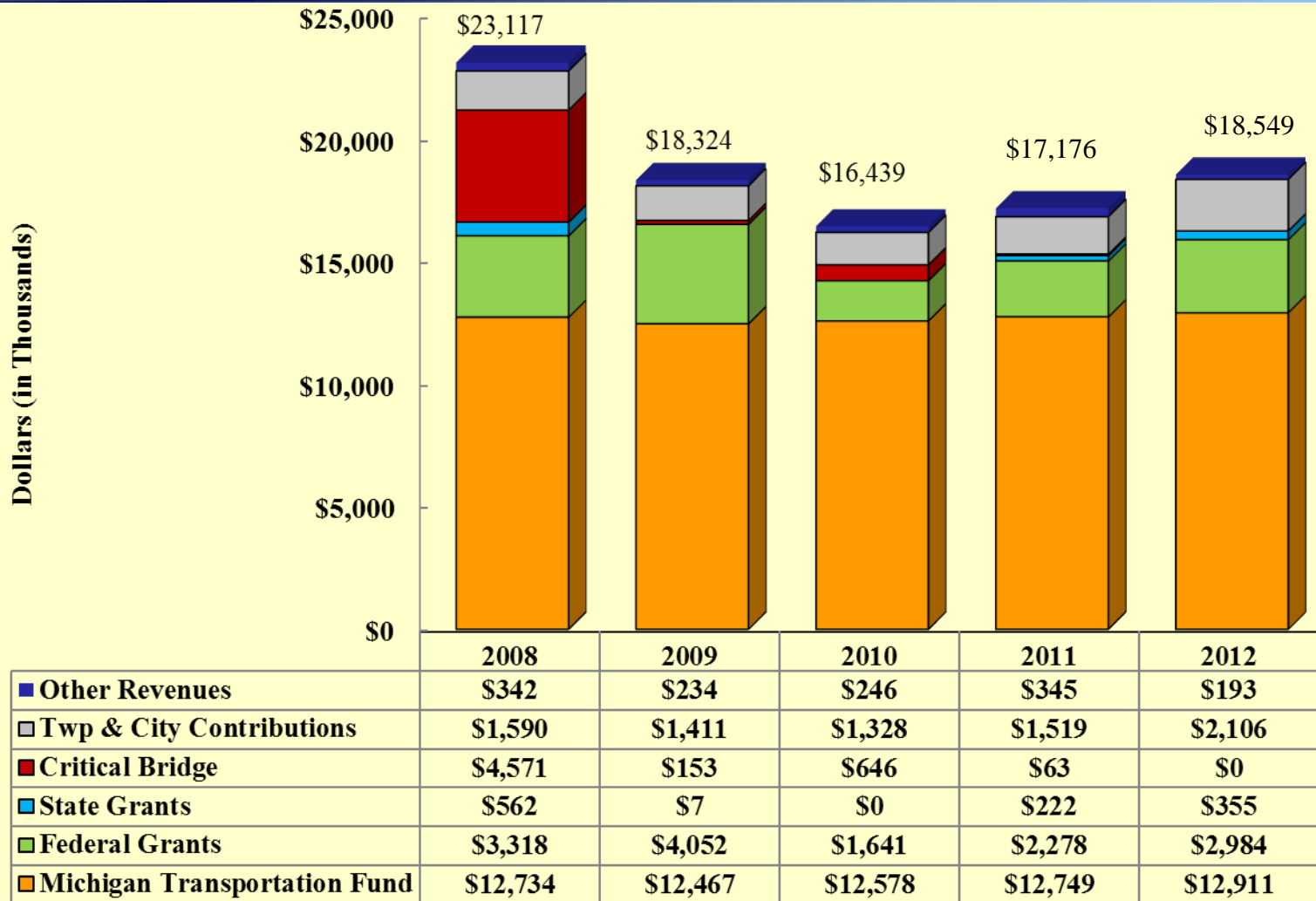
December 31, 2012



# Kalamazoo County Road Commission

## Road Fund Revenue

Years Ended December 31, 2008 through 2012\*

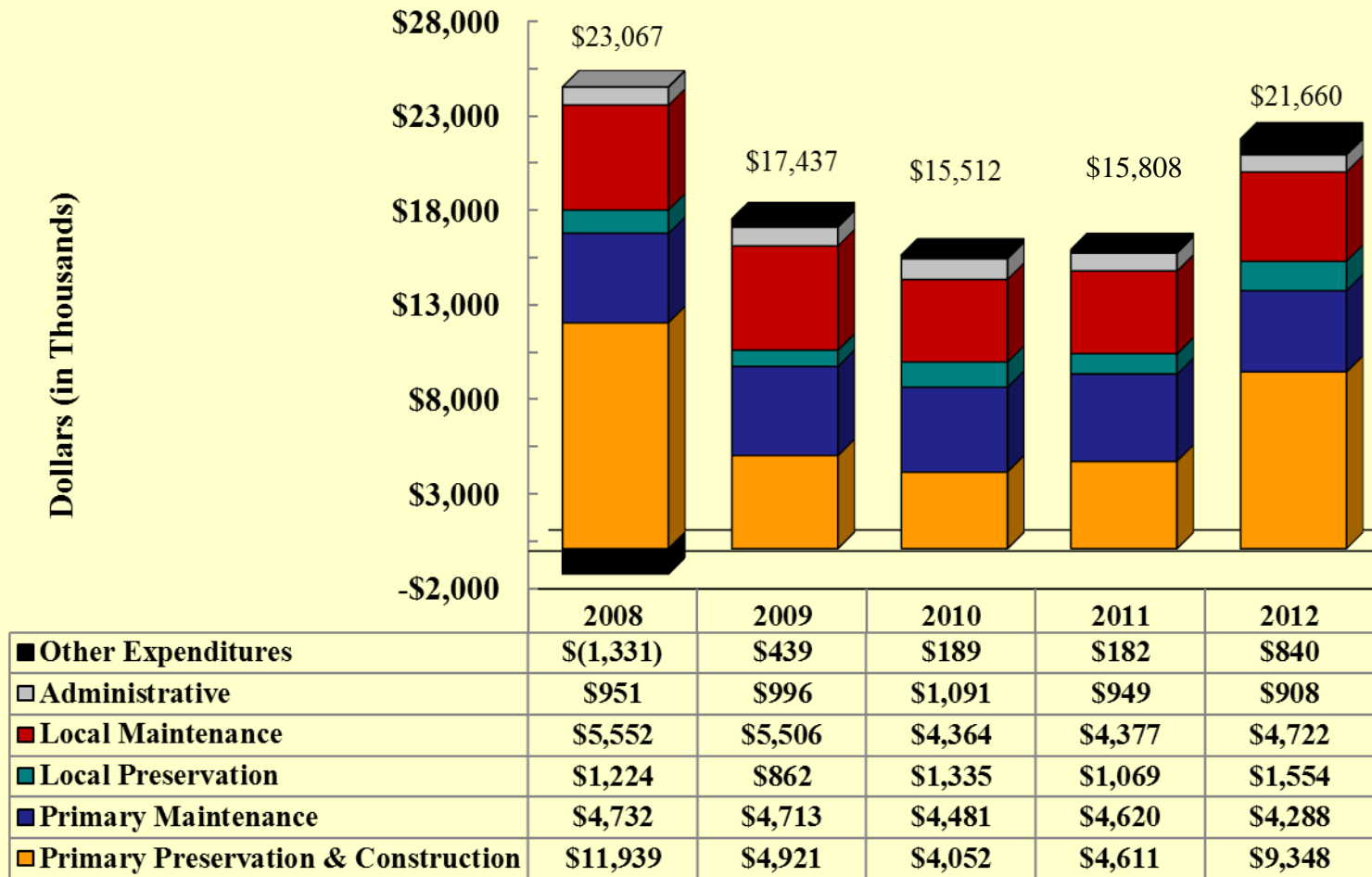


\* All years exclude construction in-kind revenue

# Kalamazoo County Road Commission

## Road Fund Expenditures

### Years Ended December 31, 2008 through 2012 \*



\* All years exclude construction in-kind expenditures

# Kalamazoo County Road Commission

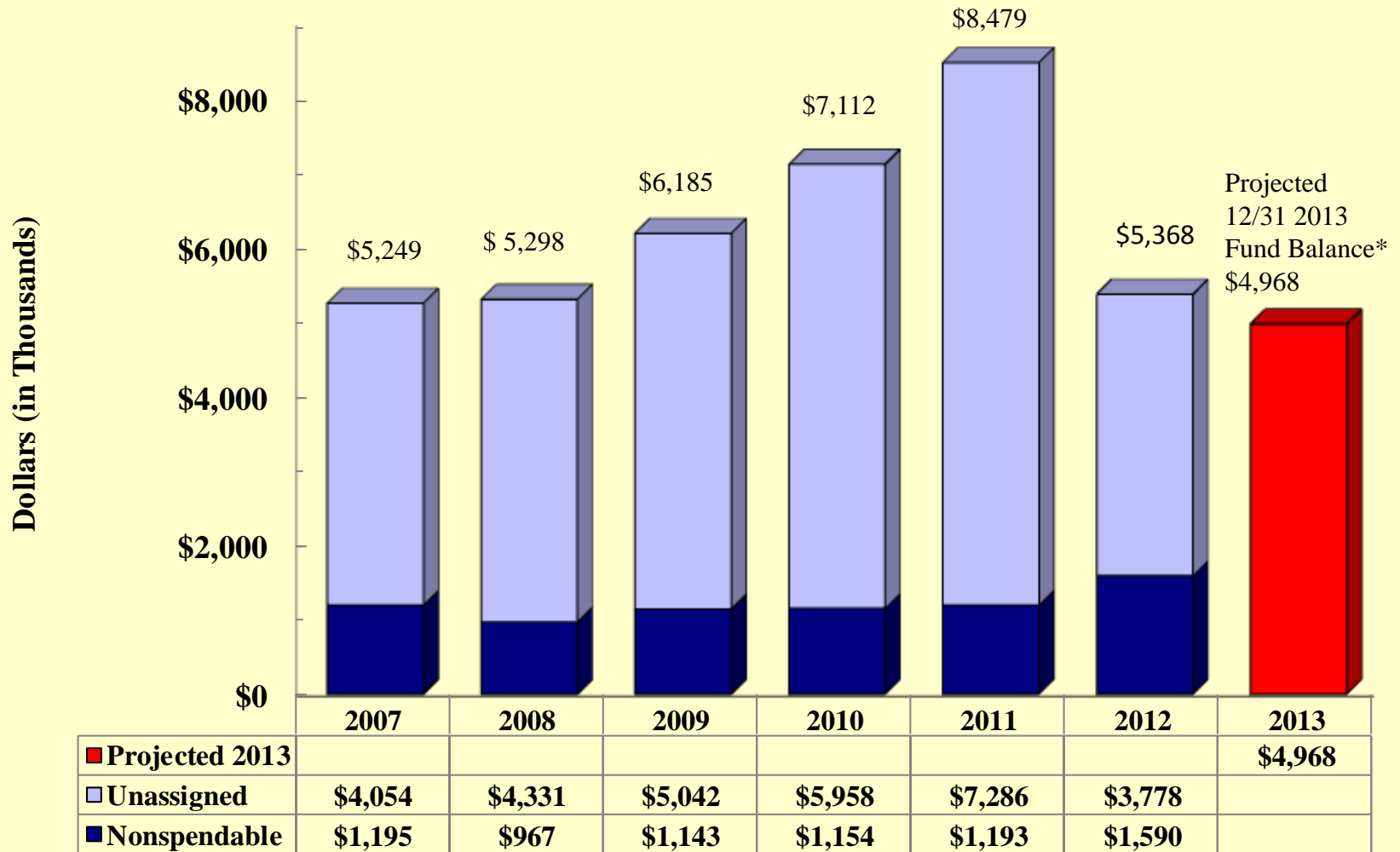
## Road Fund - Budget to Actual Year Ended December 31, 2012

	<b>Original Budget</b>	<b>Amended Budget</b>	<b>Actual</b>	<b>Variance</b>
Total Revenues	\$17,823,436	\$18,465,500	\$19,594,350	\$1,128,850
Total Expenditures	18,871,876	22,650,800	22,705,179	(54,379)
Revenue under Expenditures	(1,048,440)	(4,185,300)	(3,110,829)	1,074,471
<b>Fund Balance</b>	<b>\$7,430,278</b>	<b>\$4,293,418</b>	<b>\$5,367,889</b>	<b>\$1,074,471</b>

# Kalamazoo County Road Commission

## Road Fund – Fund Balance

For the Years Ended December 31, 2007 through 2012 \*\*

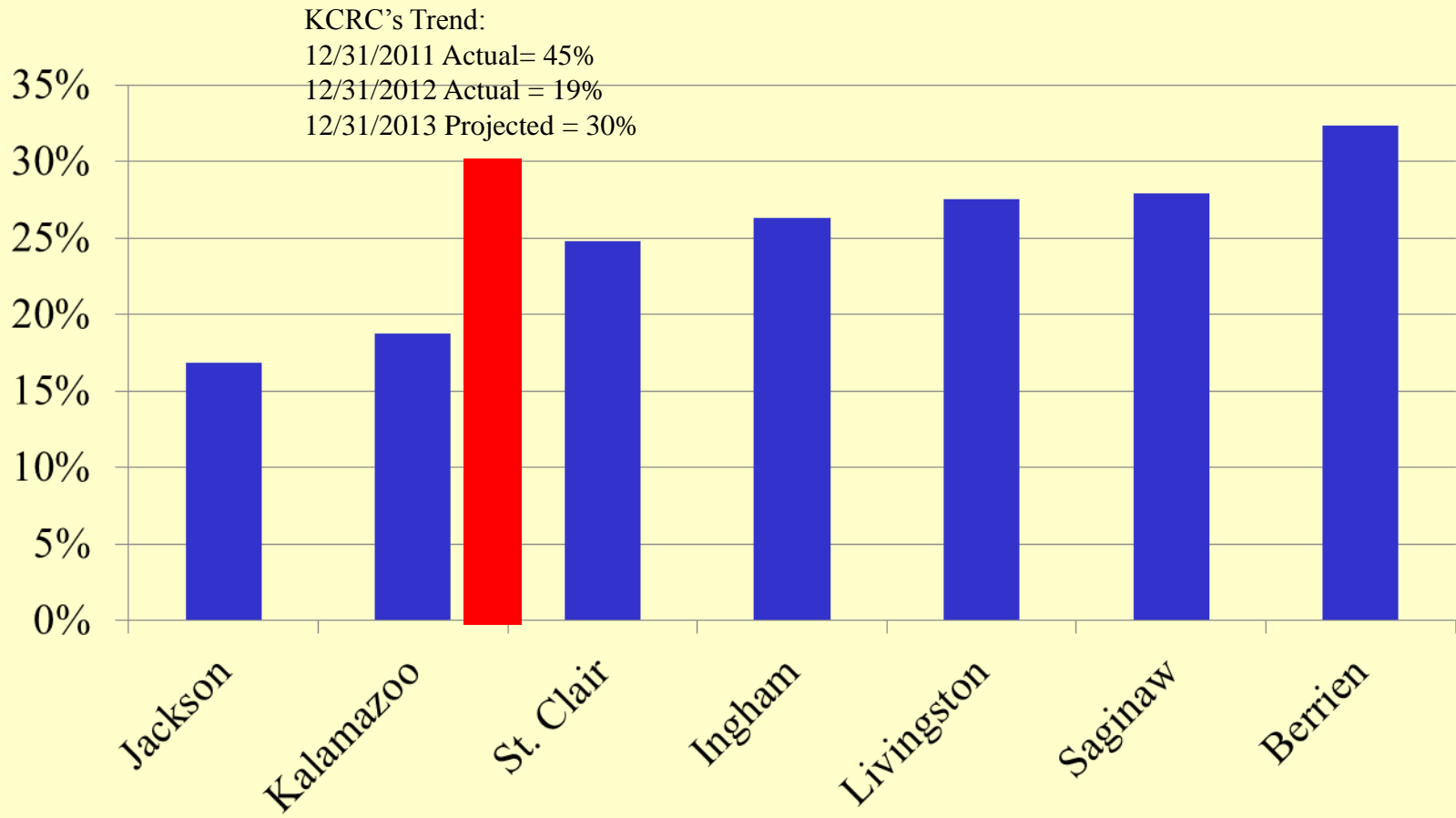


\*12/31/2013 fund balance projected based on KCRC's 2013 budget.

\*\* Prior year fund balance classifications have been restated to reflect GASB 54 definitions of fund balance classifications.

# Kalamazoo County Road Commission

## Unrestricted Fund Balance as a Percentage of Annual Expenditures Comparison to Other Road Commissions \*



\*Road Commissions selected for comparison based on annual MTF funding similar to KCRC.

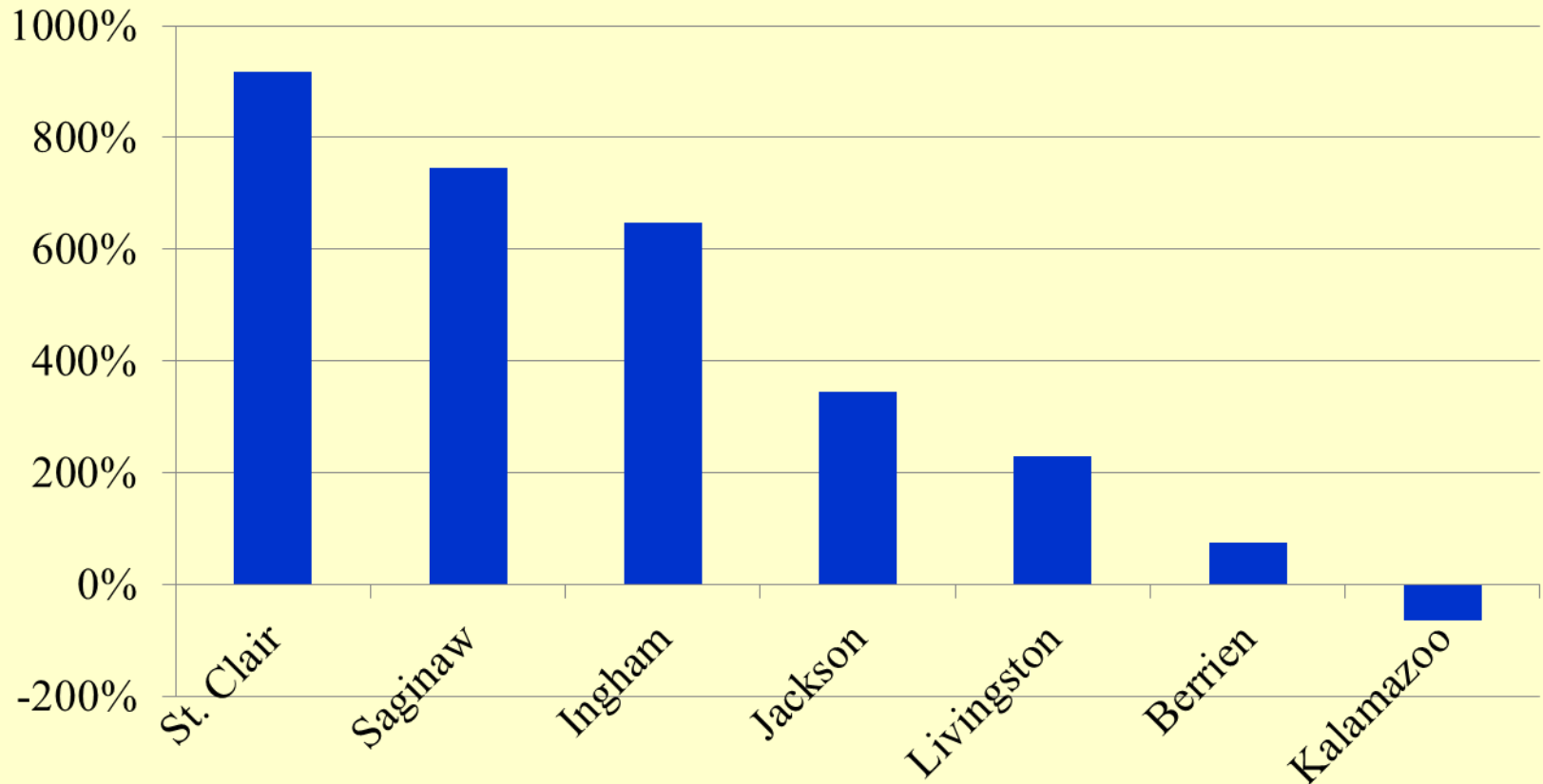
Information based on the most recently available financial statements, as follows:

Kalamazoo – 2012 Financial Statements

All others – 2011 Financial Statements

# Kalamazoo County Road Commission

## Unfunded Pension and OPEB Obligations as a Percentage of Annual Payroll Expenditures Comparison to Other Road Commissions \*



\*Road Commissions selected for comparison based on annual MTF funding similar to KCRC.

Information based on the most recently available financial statements, as follows:

Kalamazoo – 2012 Financial Statements

All others – 2011 Financial Statements



*Thank you for the opportunity to serve the  
Kalamazoo County Road Commission*



**Beth Bialy**  
248-223-3377  
Beth.Bialy@plantemoran.com

**Kris Ray**  
248-223-3652  
Kris.Ray@plantemoran.com