

MATERIALS

Salt, sand, and liquid deicer are applied as moderately as possible, without presenting unacceptable risk to the motoring public. The salt keeps the sand from freezing, while the sand provides traction to the vehicles.

When the temperature drops below 20° F salt becomes less effective. The use of liquid deicer increases the melting capability at lower temperatures in addition to reducing the bounce and scatter of salt when applied to the road.

PLOWING SERVICE LIMITATIONS

The RCKC's snow removal policy is designed to provide the best service possible, but residents should have realistic expectations. Unpredictable weather conditions or events and limited financial resources make it impossible to ensure absolutely safe roads.

We encourage you to slow down and drive defensively. Even with the best service, driving conditions may still be hazardous in the winter months.

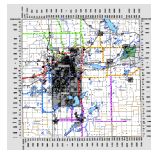
SNOW ROUTE SYSTEM

When winter weather affects road conditions, our goal is to provide the maximum level of service to the greatest number of people as quickly as possible. The RCKC has designated a special network of roads within the county as a snow route system. Snow route roads receive our attention first. This network includes more than 286 miles.

SNOW REMOVAL PRIORITIES

The following priorities have been identified for winter maintenance:

1. Designated snow route roads
 - *Level 1
 - *Level 2
2. Snow Maintenance Districts
 - *Remainder of primary roads
 - *Local Roads
 - *Subdivision/Plat Roads
 - *Dead-end and cul-de-sac roads

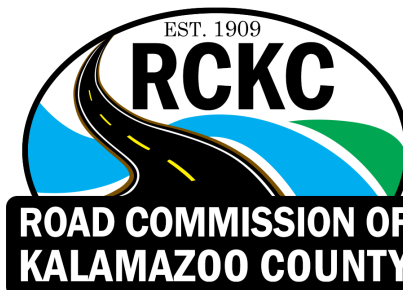


Maps of these areas can be found at www.kalamazoo-countyroads.com/winter_maintenance

JURISDICTION

If you have questions about snow removal in an incorporated area, you should contact that particular city or village. Michigan Department of Transportation handles snow removal activities on roads under its jurisdiction (I, U.S. and M routes).

CONNECT WITH US



WWW.KALAMAZOOCOUNTYROADS.COM
 4400 SOUTH 26TH STREET
 KALAMAZOO, MI, 49048
 PHONE: (269) 381-3171
 FAX: (269) 381-1760



WINTER MAINTENANCE

KEEPING ROAD USERS SAFE DURING WINTER WEATHER EVENTS



WINTER MAINTENANCE OVERVIEW

Safe driving conditions are always a priority for the Road Commission of Kalamazoo County (RCKC), including the winter months. In total, we are responsible for 1,270 miles of county roads. By monitoring weather forecasts frequently, we are able to meet winter's challenges and implement an effective winter maintenance plan.

As part of our on-going winter maintenance assessments, we have identified a level of service to provide advanced coverage during peak travel and commute times. RCKC has incorporated a 3-shift program by adding a second and third shift during the winter months.

Generally, plowing operations begin when slippery conditions exist, or snow levels reach about two inches on major roads. If snow continues to fall, or is predicted, we are prepared to respond accordingly. Special attention is paid to bridge surfaces as they tend to freeze more rapidly than other surfaces.

When snowfall occurs overnight, plowing begins at 12am so that the roads will be as clear as possible by the time most are starting their work or school commute. If weather or driving conditions warrant, RCKC crews work with law enforcement to handle emergency situations. We work closely with law enforcement to make sure road conditions are safe for area motorists. 911 dispatch handles emergency calls for the RCKC after regular business hours and can alert our team to respond to a particular problem.



MAILBOX DAMAGE

A mailbox or snow shield is personal property and thus is placed in the public right-of-way (ROW) at its own risk. Mailbox owners are encouraged to regularly inspect and perform routine maintenance on their mailbox, just as they would for other parts of their property. Mailboxes should withstand wet, heavy snow and slush coming off from a plow.

The RCKC regrets any damage to mailboxes and/or supports that occurs as a result of winter maintenance activities. By law, the RCKC has no legal responsibility for personal property claims while in the course of its government function. The RCKC will not assume responsibility for mailbox or snow shield damage that may be caused by snow or ice that is being plowed from the roadway. The RCKC mailbox policy does state that reimbursement is possible when damage sustained is a result of a direct connection with the RCKC vehicle (not from the weight or force from the snow/ice).

Because it is the statutory responsibility of the RCKC to maintain the roadways and ROW property, road agencies are not held liable or responsible for any damage caused to private installations located within the public roads and/or ROW in place without a permit.

SAFETY REMINDERS

Children

Please help us educate children on the risks presented by snowplows and the dangers of playing on the piles of snow and ice near the roadway.

- **Keep children away from snow piles near the roadway**
- **Do not build snow forts, make tunnels, or play in snowbanks near the roads**
- **Keep away from the edge of the roadway as you wait for the school bus, get the mail, etc.**
- **Stay away from the end of the driveway when a snowplow is approaching**
- **Hidden objects under the snow, when thrown by the snowplow, can cause serious injury**
- **Keep sleds and toys away from the roads**

Road Users

- **Do not park or abandon a vehicle or other objects in the right-of-way**
- **Do not attempt to pass a snowplow when they are plowing**
- **Never pass a plow on the right side, the wing plows are often hidden by the snow cloud being kicked up by the plow**
- **Plow drivers have limited visibility and they cannot see directly behind their trucks**
- **Road users are advised not to travel next to a plow**
- **Plows can suddenly move sideways from hitting drifts or cutting through packed snow**
- **Don't crowd the plow**
- **Always allow extra time for travel**



MICHIGAN SNOW STATUTE

Unauthorized snowplowing across the road violates the Michigan Vehicle Code Act 300 of 1949. The detailed legislature can be found under [Section 257.677a](#).

MCL 257.677a—Snow, ice, slush on roadway
(1) *As used in this section:*

- a. "Person" shall not include the state or a political subdivision of the state or an employee of the state or a political subdivision of the state operating within the scope of his duties.
- b. "Safety Vision" means an unobstructed line of sight enabling a driver to travel upon, enter, or exit a roadway in a safe manner.
 1. A person shall not remove, or cause to be removed, snow, ice, or slush across a roadway or the shoulder of a roadway in a manner, which obstructs the safety vision of the driver of a motor vehicle other than off-road vehicles.
 2. A person shall not deposit, or cause to be deposited, snow, ice, or slush onto or across a roadway or the shoulder of the roadway in a manner which obstructs the safety vision of a motor vehicle.
 3. A person shall not deposit, or cause to be deposited, snow, ice or slush on any roadway or highway.

ABANDONED CARS

If there are cars abandoned in the ROW that interfere with the RCKC winter operations, law enforcement will be contacted.

To avoid stalled cars in the winter, residents are advised to keep their cars in good working condition and not attempt to drive through drifts. Although the RCKC personnel are not authorized to pull cars from snowdrifts, we will notify law enforcement of your need for assistance.