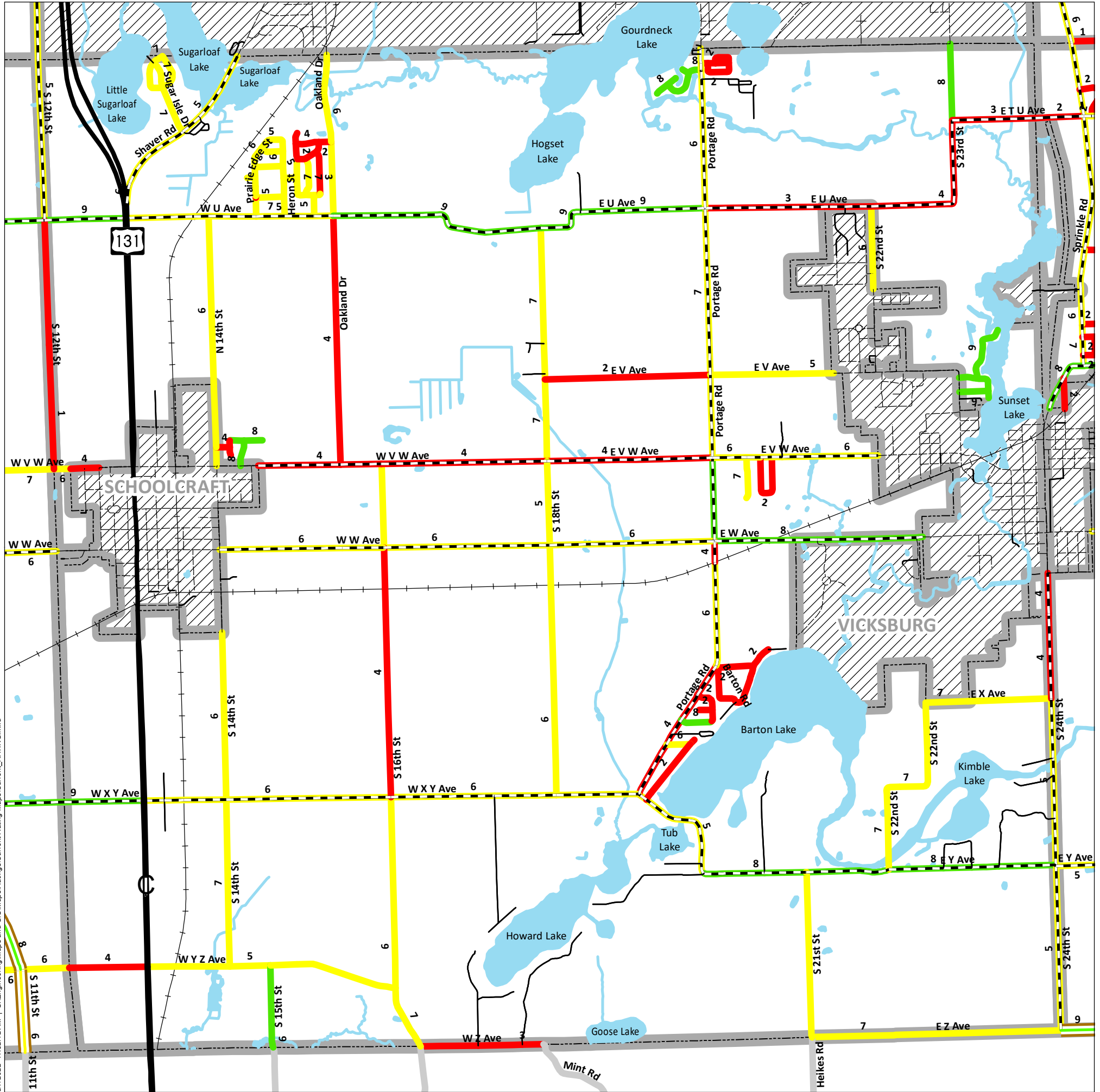


# 2022 Current Asset Management Ratings Map

## Schoolcraft Twp



3/7/2022 11:32:12 AM I:\S:\Engineering\Maps and GIS\MapRatings\Current Rating Maps\Current\_RATING.mxd

### ASSET MANAGEMENT

Asset Management is a systematic approach to selecting the best investment at the right time to maximize the life of the asset being measured, in this case, road surface conditions. The goal is to maintain our roads in good condition, making periodic investments in the pavement, rather than letting it deteriorate to a level that requires a major investment to bring it back to a good condition. Periodic maintenance investments typically total less than the major investment required to rebuild a road.

### PASER RATINGS

PASER stands for Pavement Surface Evaluation and Rating. The PASER rating scale ranges from 1, poor condition, to 10, brand new pavement. A pavement will only be a 10 the first year of its life, the second year it may automatically become a 9. Any condition of 8 or greater is considered to be a good condition, 7, 6 or 5 are fair, 4 or lower is poor.

- PASER based on physical ratings and project improvements.
- Private roads not rated.

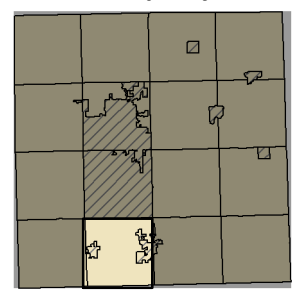
### IBR SYSTEM

IBR stands for Inventory Based Rating. Condition assessment of unpaved/gravel roads is based on the Surface Width, Drainage Adequacy and Structural Adequacy of the roadway. Each of these three assessment areas are then aggregated to the IBR rating for good, fair, poor ranging from 1, poor condition, to 10, good condition. Once initial ratings are established, updates only occur when a construction or rehabilitation activity is completed. The baseline IBR rating occurred in 2015.

### THE RIGHT FIX AT THE RIGHT TIME

The RCKC determines the best fix to optimize service life for each of our projects. Good pavement management involves less expensive treatments earlier in the life of the pavement in order to take full advantage of infrastructural investments.

#### Township Key



Class	Paved Road Ratings	Gravel Road Ratings	Boundary Designations
State Trunkline	Good (10, 9, 8)	Good (10, 9, 8)	Township/City
County Primary	Fair (7, 6, 5)	Fair (7, 6, 5)	Lakes & Rivers
County Local - Gravel	Poor (4, 3, 2, 1)	Poor (4, 3, 2, 1)	City/Village Limits
City	Unrated		
Private	Private Roads (Not Rated)		

Last Updated: 3/7/2022

**RCKC**  
Road Commission  
of Kalamazoo County  
3801 E. Kilgore Road  
Kalamazoo, MI 49001  
(269) 381-3171  
Fax (269) 381-1760  
www.kalamazooountyroads.com

For more information on this, as well as on other topics, please feel free to contact our office or visit our website.