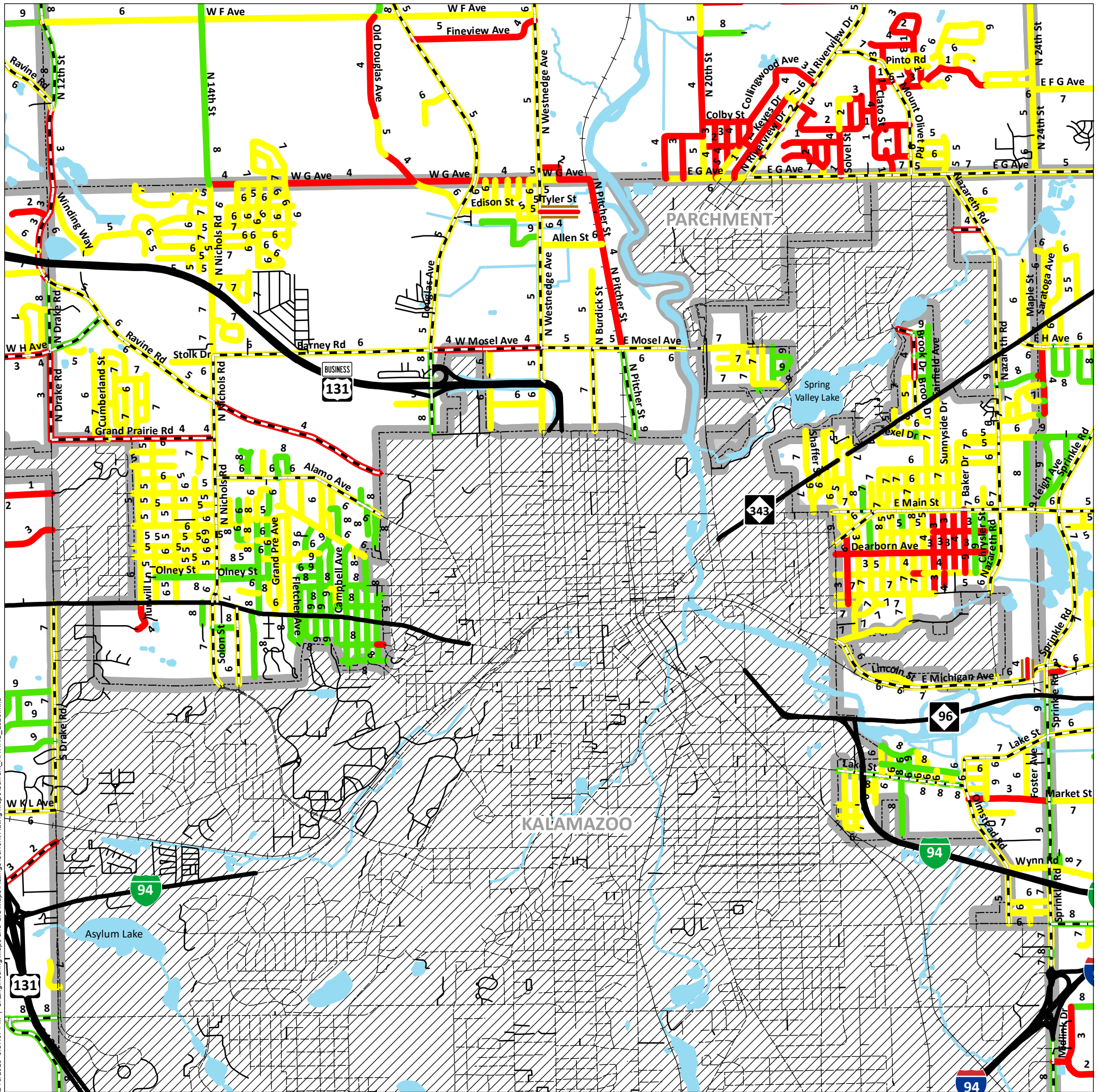


2026 Current Asset Management Ratings Map Kalamazoo Twp



2/16/2026 3:37:07 PM I:\S:\Engineering\Maps and GIS\Maps\Ratings\Current Rating Maps\Current_RATING_2026.mxd

PASER RATINGS

The Pavement Surface Evaluation and Rating (PASER), is a system used to assess the condition of paved roads. Surface conditions, such as cracks and ruts are the basis for assessment. These factors contribute to the PASER rating which range from 1 (poor condition) to 10 (good condition), categorizing the roads as good, fair, or poor. 10 signifies brand new pavement which can only be maintained during its first year of life; in the second year, it typically drops to a rating of 9. Updates to these ratings occur after physical assessments or following project improvements. Note that private roads are not included in this rating system.

IBR RATINGS

The Inventory Based Rating (IBR) is a method for assessing the condition of unpaved or gravel roads. This assessment is based on three key factors: Surface Width, Drainage Adequacy, and Structural Adequacy of the roadway. Each of these factors contributes to the overall IBR rating, which ranges from 1 (poor condition) to 10 (good condition), categorizing the roads as good, fair, or poor. Initial ratings are established, and updates are made only after construction or rehabilitation activities are completed. The baseline IBR rating was established in 2015.

ASSET MANAGEMENT

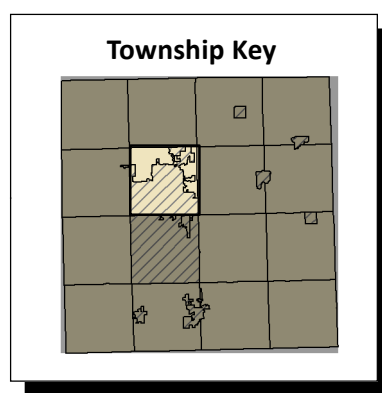
Asset management is a systematic approach to selecting the best investments at the right time to maximize the lifespan of the asset being evaluated—in this case, road surface conditions. The objective is to keep our roads in good condition by making periodic investments in pavement maintenance, rather than allowing them to deteriorate to a level that requires a major investment to restore them. Typically, the cost of periodic maintenance investments is less than the cost of a major reconstruction project needed to rebuild a road.

THE RIGHT FIX AT THE RIGHT TIME

The RCKC focuses on effective strategies to extend the life of our projects and ensure reliable infrastructure. By prioritizing early and cost-effective pavement treatments, we can significantly enhance the lifespan of our roads and surfaces. This approach maximizes investments that support sustainable maintenance while reducing long-term costs.

Road Type	Road Ratings	Boundaries
State Trunkline	Good (10, 9, 8)	Township/City
RCKC Primary	Fair (7, 6, 5)	Lakes & Rivers
RCKC Gravel	Poor (4, 3, 2, 1)	City/Village Limits
City		
Private		
Not RCKC Jurisdiction		

Last Updated: 2/16/2026



EST. 1909
RCKC
**ROAD COMMISSION OF
KALAMAZOO COUNTY**

WWW.KALAMAZOOCOUNTYROADS.COM
4400 SOUTH 26TH STREET
KALAMAZOO, MI, 49048
PHONE: (269) 381-3171
FAX: (269) 381-1760

For more information on this, as well as on other topics, please feel free to contact our office or visit our website.