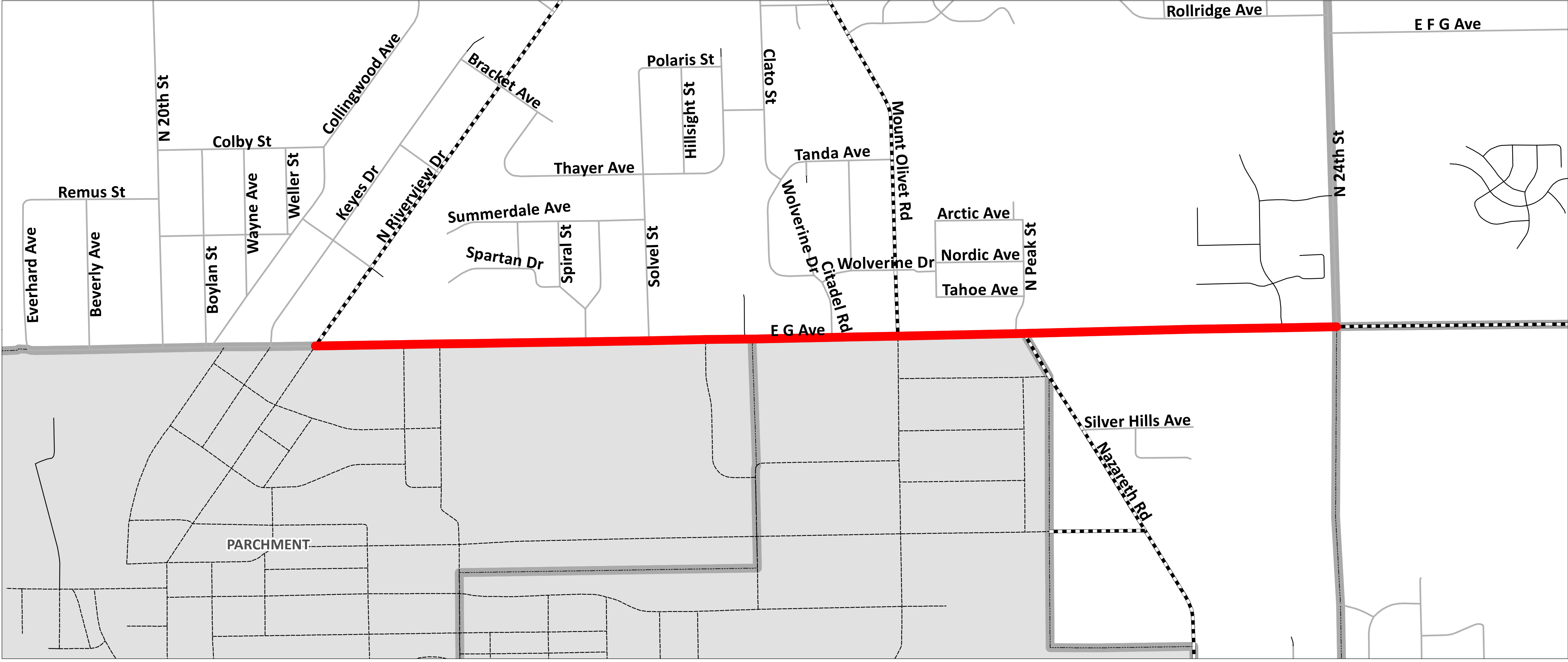


# 2021 Project: G Avenue

## Kalamazoo County

**RCKC**  
 Road Commission  
 of Kalamazoo County  
 3801 E. Kilgore Road  
 Kalamazoo, MI 49001  
 (269) 381-3171  
 Fax (269) 381-1760  
 www.kalamazooountyroads.com



**ASSET MANAGEMENT**

Asset Management is a systematic approach to selecting the best investment at the right time to maximize the life of the asset being measured, in this case, road surface conditions. The goal is to maintain our roads in good condition, making periodic investments in the pavement, rather than letting it deteriorate to a level that requires a major investment to bring it back to a good condition. Periodic maintenance investments typically total less than the major investment required to rebuild a road.

**Legend**

**Preservation & Structural Improvement**



**Road Classifications**

- State Trunkline
- County Primary
- County Local
- County Local - Gravel
- City
- Private

**Boundary Designations**



- Traffic Signal Improvement
- Intersection Improvement
- Bridge Improvement

**PROJECT LIMITS:**  
 RIVERVIEW DRIVE TO 24TH STREET

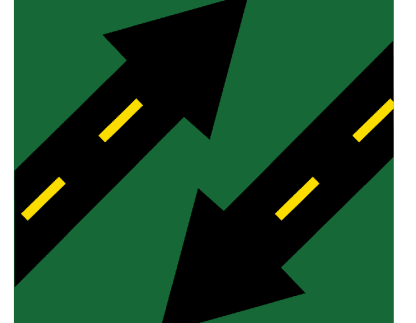
**PROJECT SCOPE:**  
 ROAD SURFACE MILLING  
 ASPHALT OVERLAY  
 SIDEWALK RAMP IMPROVEMENTS  
 MINOR INTERSECTION IMPROVEMENTS

**PROJECT FUNDING:**  
 FEDERAL SURFACE TRANSPORTATION PROGRAM  
 ROAD COMMISSION OF KALAMAZOO COUNTY

**PROJECT CONSULTANT:**  
 MOORE & BRUGGINK

**DISCLAIMER**  
 Projects may be subject to change and do not include design, non-motorized, preventative maintenance or local road projects.

Stay informed on projects!  
 Sign up for RCKC CONNECT!



RCKC CONNECT  
 RCKC ALERTS SIGN UP NOW

For more information on this, as well as on other topics, please feel free to contact our office or visit our website.



3/23/2021

3/23/2021 8:16:35 AM | S:\Engineering\Maps and GIS\Maps\CP\2021\_G\_Ave.mxd