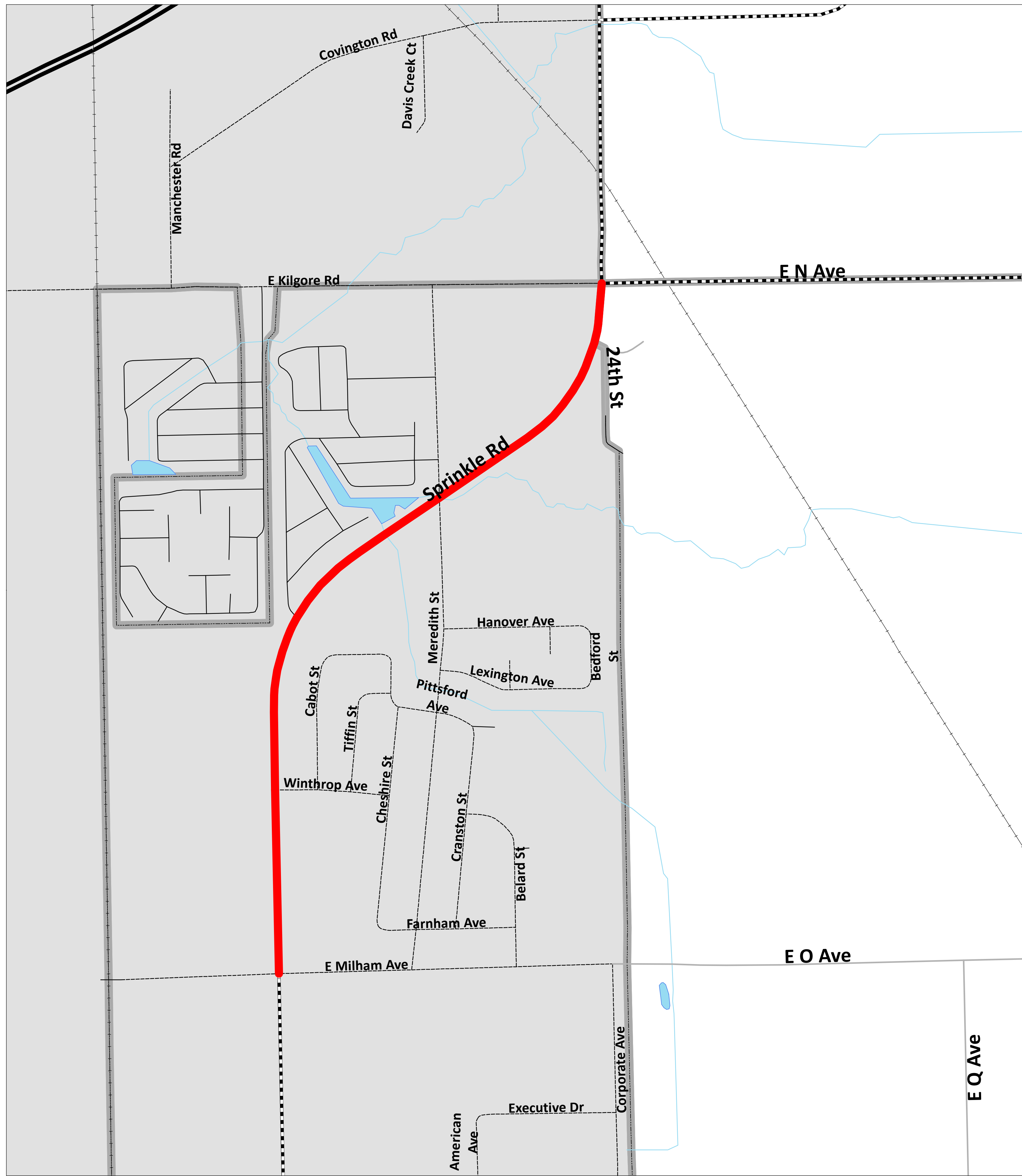


2021 Project: Sprinkle Road

Kalamazoo County

RCKC Road Commission
of Kalamazoo County
3801 E. Kilgore Road
Kalamazoo, MI 49001
(269) 381-3171
Fax (269) 381-1760
www.kalamazoocountyroads.com



PROJECT LIMITS:
MILHAM AVENUE TO N AVENUE (KILGORE ROAD)

PROJECT SCOPE:
ROAD SURFACE MILLING
ASPHALT OVERLAY
CULVERT REPLACEMENTS
DRAINAGE IMPROVEMENTS

PROJECT FUNDING:
FEDERAL SURFACE TRANSPORTATION PROGRAM
ROAD COMMISSION OF KALAMAZOO COUNTY
CITY OF PORTAGE

PROJECT CONSULTANT:
WIGHTMAN

PROJECT DETOUR:
LANE CLOSURES ON SPRINKLE ROAD
EXPECT DELAYS
CONSIDER ALTERNATE ROUTE
SIDE STREET CLOSURES FOR CULVERT WORK

PROJECT SCHEDULE:
MAY-NOVEMBER 2021

ASSET MANAGEMENT
Asset Management is a systematic approach to selecting the best investment at the right time to maximize the life of the asset being measured, in this case, road surface conditions. The goal is to maintain our roads in good condition, making periodic investments in the pavement, rather than letting it deteriorate to a level that requires a major investment to bring it back to a good condition. Periodic maintenance investments typically total less than the major investment required to rebuild a road.

Legend

Preservation & Structural Improvement

- 2021

Road Classifications

- State Trunkline
- County Primary
- County Local
- County Local - Gravel
- City
- Private
- Lakes & Rivers

Boundary Designations

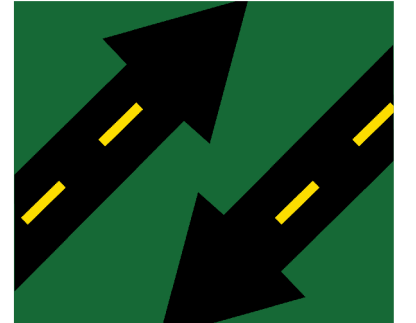
- Township/City

Improvements

- Traffic Signal Improvement
- Intersection Improvement
- Bridge Improvement

DISCLAIMER
Project details may be subject to change and do not include design, non-motorized, preventative maintenance or local road projects.

Stay informed on projects!
Sign up for RCKC CONNECT!



RCKC CONNECT
RCKC ALERTS SIGN UP NOW

For more information on this, as well as on other topics, please feel free to contact our office or visit our website.



4/9/2021

4/9/2021 11:41:41 AM | S:\Engineering\Maps and GIS\Maps\CP\2021_Sprinkle.mxd