

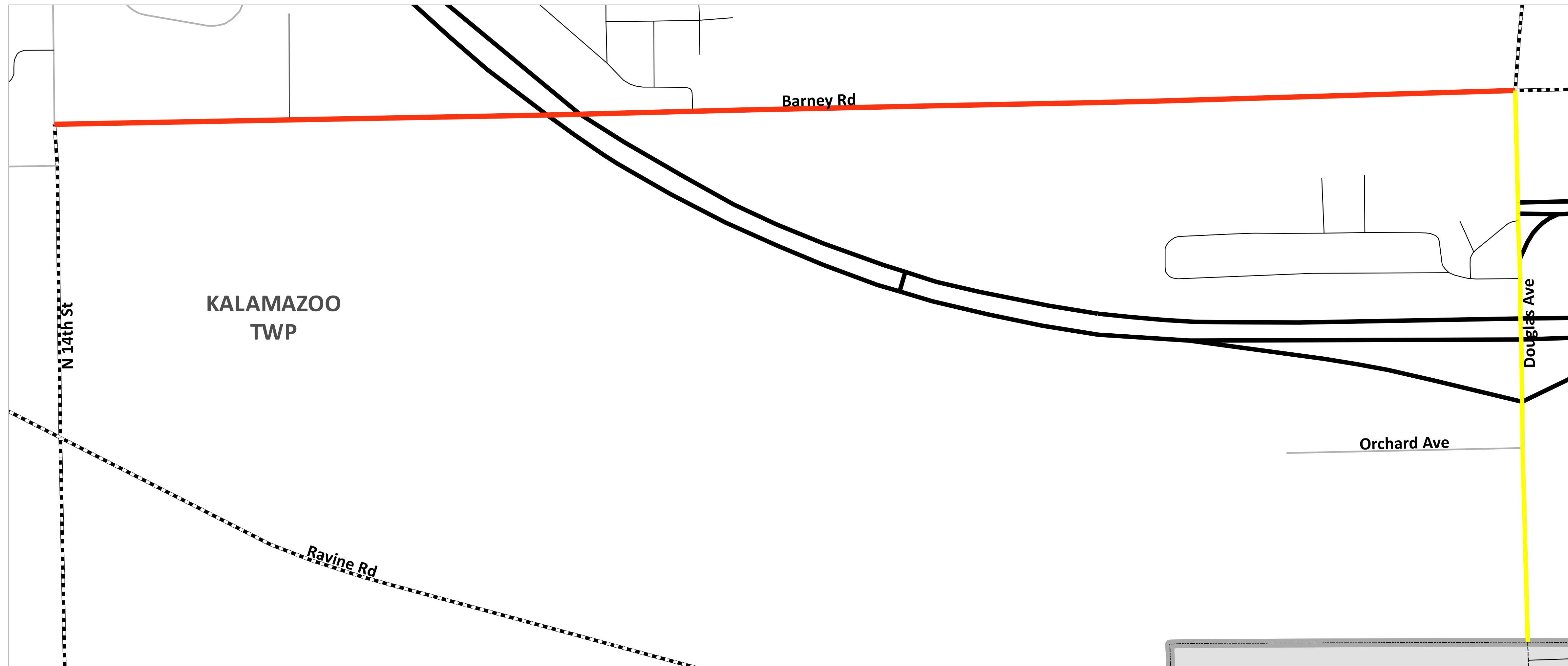
# 2022 Project: Barney Road

## Kalamazoo County

**RCC**  
**KCC**  
**C**

Road Commission  
of Kalamazoo County

3801 E. Kilgore Road  
Kalamazoo, MI 49001  
(269) 381-3171  
Fax (269) 381-1760  
www.kalamazooountyroads.com



### ASSET MANAGEMENT

Asset Management is a systematic approach to selecting the best investment at the right time to maximize the life of the asset being measured, in this case, road surface conditions. The goal is to maintain our roads in good condition, making periodic investments in the pavement, rather than letting it deteriorate to a level that requires a major investment to bring it back to a good condition. Periodic maintenance investments typically total less than the major investment required to rebuild a road.

### Legend

#### Preservation & Structural Improvement

— 2022

— 2023

#### Road Classifications

— State Trunkline

- - - County Primary

— County Local

== County Local - Gravel

..... City

— Private

#### Boundary Designations

▭ Township Line

● Traffic Signal Improvement

■ Intersection Improvement

▲ Bridge Improvement

### PROJECT LIMITS:

NICHOLS ROAD TO DOUGLAS AVENUE

### PROJECT SCOPE:

ROAD SURFACE MILLING  
ASPHALT OVERLAY  
SHOULDER WIDENING  
DRAINAGE IMPROVEMENTS  
TRAFFIC SIGNAL IMPROVEMENT AT MOSEL & DOUGLAS

### PROJECT FUNDING:

FEDERAL SURFACE TRANSPORTATION PROGRAM  
ROAD COMMISSION OF KALAMAZOO COUNTY

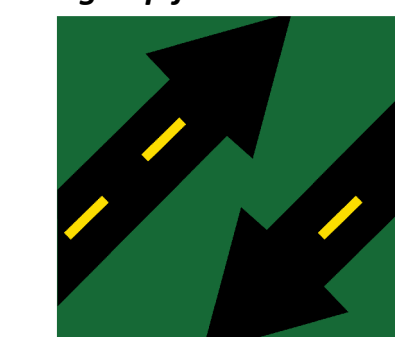
### PROJECT CONSULTANT:

HUBBELL, ROTH & CLARK, INC.

### FUTURE PROJECT: DOUGLAS AVENUE 2023

ROAD SURFACE MILLING  
STORM SEWER IMPROVEMENTS  
ASPHALT OVERLAY  
UPDATING PAVEMENT MARKINGS TO 3 LANES

Stay informed on projects!  
Sign up for RCKC CONNECT!



RCKC CONNECT  
RCKC ALERTS SIGN UP NOW

### DISCLAIMER

Projects may be subject to change and do not include design, non-motorized, preventative maintenance or local road projects.

For more information on this,  
as well as on other topics,  
please feel free to contact our office  
or visit our website.

