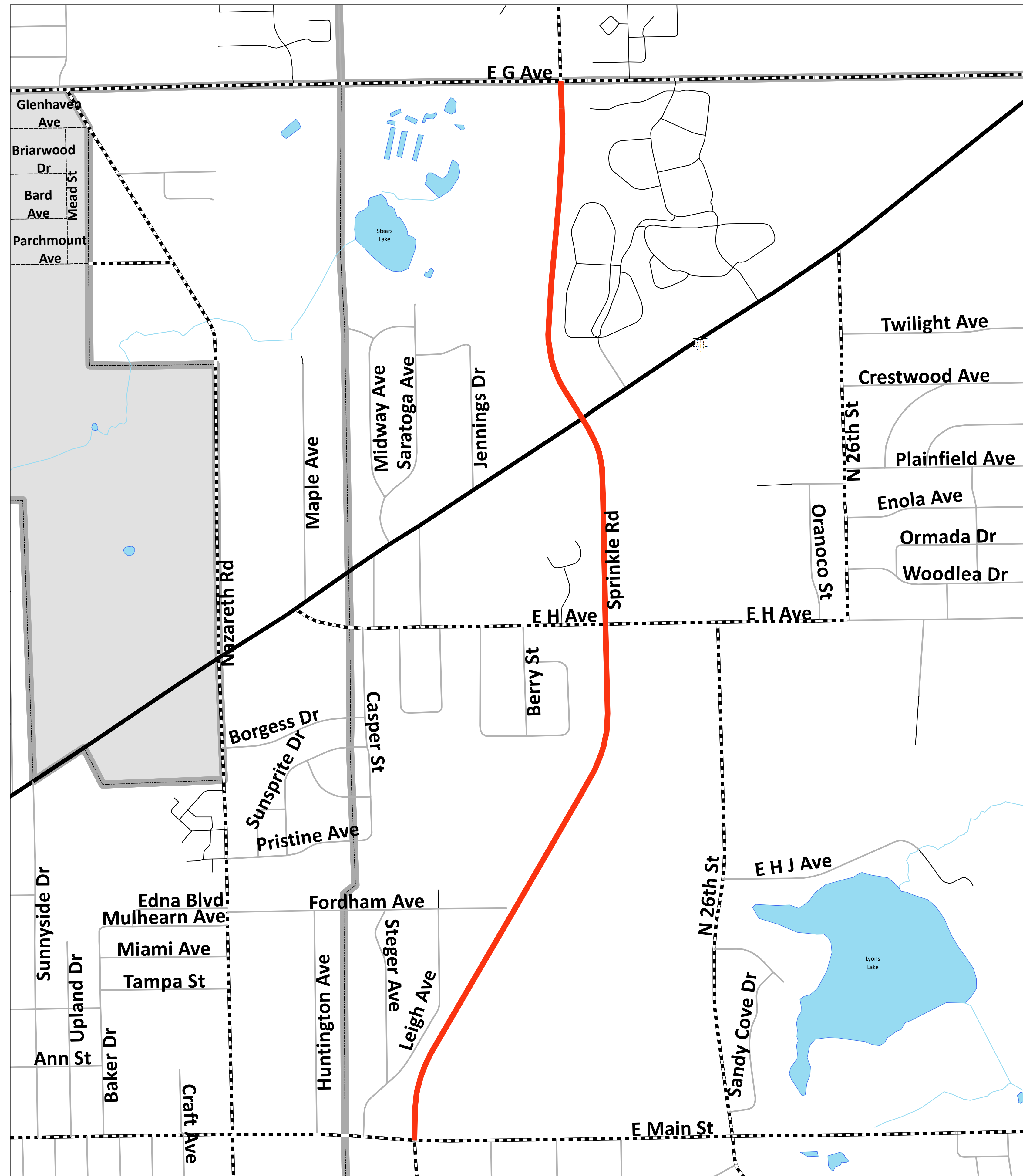


# 2022 Project: Sprinkle Road

## Kalamazoo County

**RCKC** Road Commission  
of Kalamazoo County  
3801 E. Kilgore Road  
Kalamazoo, MI 49001  
(269) 381-3171  
Fax (269) 381-1760  
www.kalamazoocountyroads.com



### PROJECT LIMITS:

E. MAIN STREET TO G AVENUE

### PROJECT SCOPE:

ROAD SURFACE MILLING  
ASPHALT OVERLAY  
CONCRETE MEDIAN AND SHOULDERS  
SIDEWALK RAMP IMPROVEMENTS

### PROJECT FUNDING:

FEDERAL SURFACE TRANSPORTATION PROGRAM  
FEDERAL SAFETY PROGRAM  
ROAD COMMISSION OF KALAMAZOO COUNTY

### PROJECT CONSULTANT:

MOORE + BRUGGINK

### PROJECT DETOUR:

LANE CLOSURES ON SPRINKLE ROAD  
EXPECT DELAYS  
CONSIDER ALTERNATE ROUTE

### PROJECT SCHEDULE:

JUNE-OCTOBER 2022

### ASSET MANAGEMENT

Asset Management is a systematic approach to selecting the best investment at the right time to maximize the life of the asset being measured, in this case, road surface conditions. The goal is to maintain our roads in good condition, making periodic investments in the pavement, rather than letting it deteriorate to a level that requires a major investment to bring it back to a good condition. Periodic maintenance investments typically total less than the major investment required to rebuild a road.

### Legend

#### Preservation & Structural Improvement

2022

#### Road Classifications

- State Trunkline
- County Primary
- County Local
- County Local - Gravel
- City
- Private

Lakes & Rivers

#### Boundary Designations

Township/City

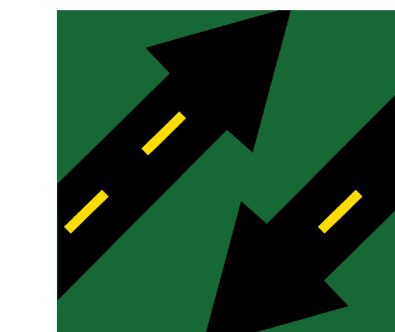
- Traffic Signal Improvement
- Intersection Improvement
- Bridge Improvement

### DISCLAIMER

Project details may be subject to change and do not include design, non-motorized, preventative maintenance or local road projects.

For more information on this, as well as on other topics, please feel free to contact our office or visit our website.

Stay informed on projects!  
Sign up for RCKC CONNECT!



RCKC CONNECT  
RCKC ALERTS SIGN UP NOW



3/17/2022